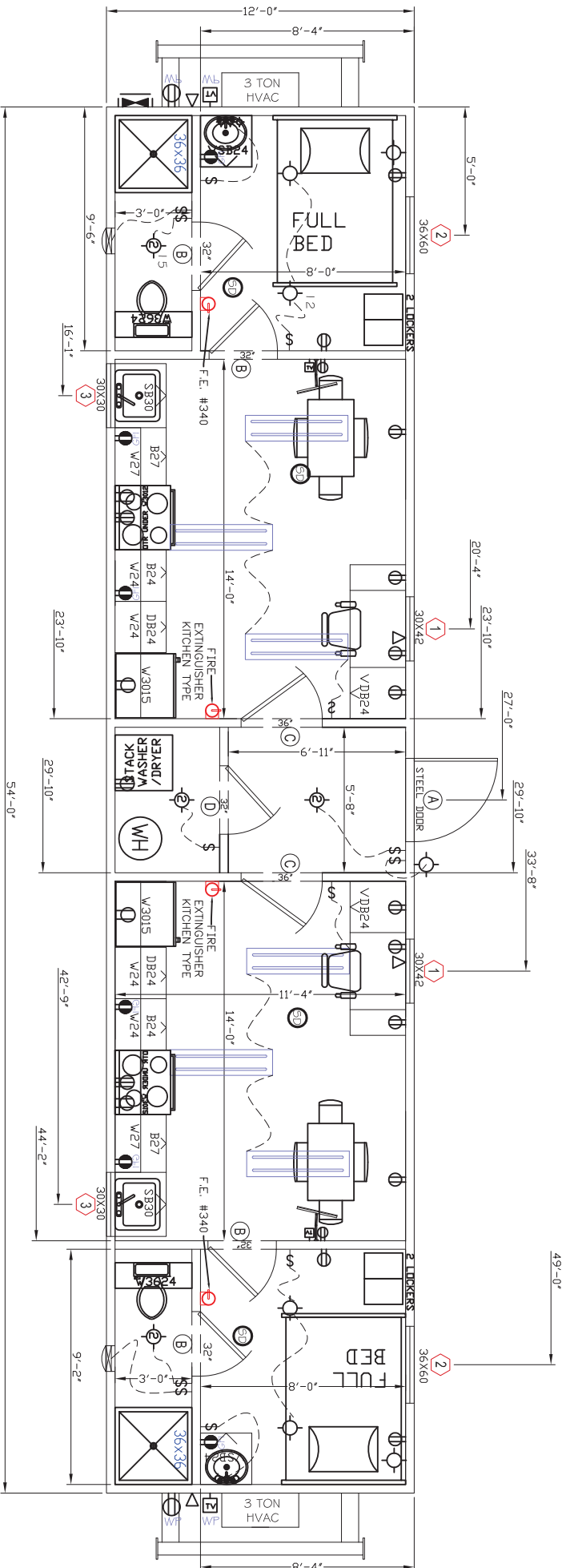


NOTES:  
 1: INSTALL LEVER ENTRY LOCKSET, DEAD BOLT (KEYED EXTERIOR/THUMBTURN INTERIOR) IN DOORS.  
 2: INSTALL LEVER ENTRY LOCKSET, DEAD BOLT (KEYED EXTERIOR/THUMBTURN INTERIOR) IN DOORS.



FLOOR PLAN

DOOR SCHEDULE	MARK	SIZE	DESCRIPTION	HARDWARE	NOTE #1
(A)	36 x 80	STEEL/STEEL			
(B)	32 x 80	HC DOOR UNIT		LEVER, PRIVACY	
(C)	36 x 80	HC DOOR UNIT		LEVER, PRIVACY	
(D)	32 x 80	HC DOOR UNIT		LEVER, PASSAGE	

WINDOW SCHEDULE	MARK	SIZE	DESCRIPTION
(1)	30 x 42	CLEAR INSULATED GLASS, V/S	
(2)	36 x 60	CLEAR INSULATED GLASS, V/S	
(3)	30 x 30	CLEAR INSULATED GLASS, V/S	

**GENERAL SHELTERS OF TEXAS, LTD.**  
 P.O. BOX 2108 DEPT. C HWY. 87 NORTH - CENTER, TX 75935

FLOOR PLAN

TITLE:  
 CUSTOMER:

PROJECT:

12' x 54' SS CQ (2M)

((SOUTHERN))

SCALE: NONE

DATE: 9/16/10

JOB NO. 091910A

DMN: M.CARL

SHEET

FP-1



GENERAL SHELTERS OF TEXAS  
 P.O. BOX 2108 DEPT. C  
 HWY. 87 NORTH - CENTER, TX 75935